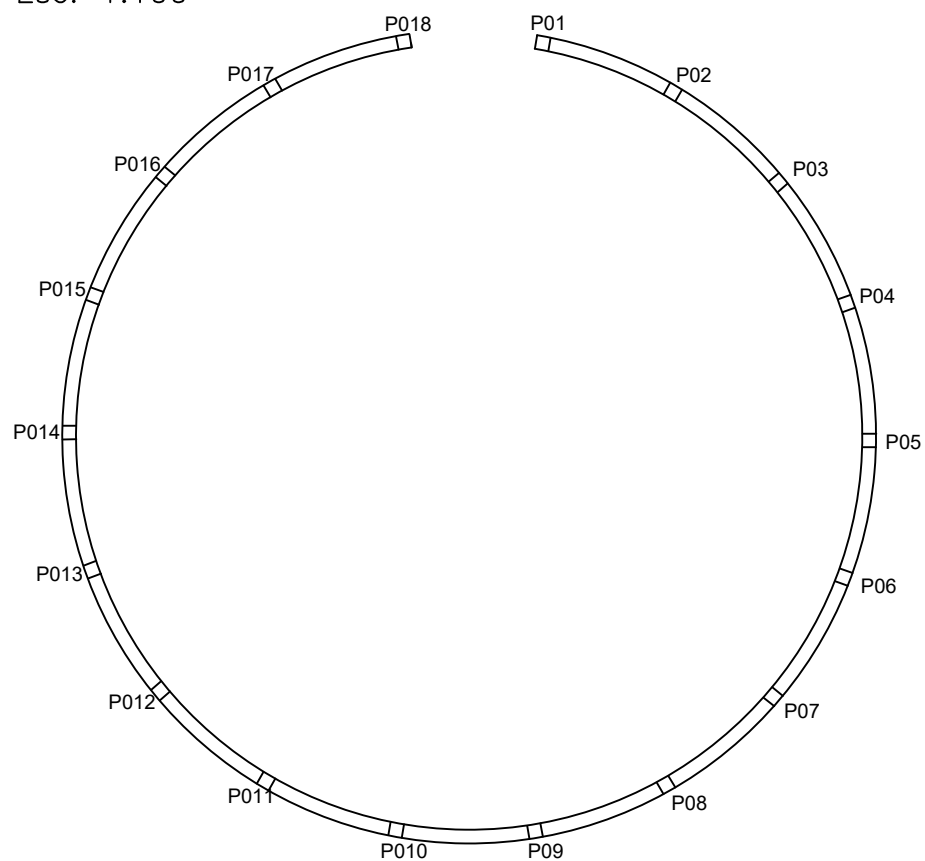


IMPLANTAÇÃO DAS ESTRUTURAS

Esc. 1:100

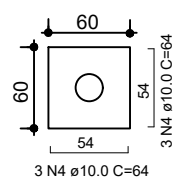


SAPATAS/BROCAS

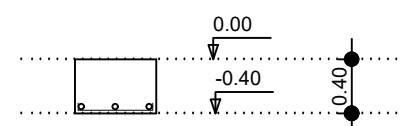
Esc. indicada

S01 à S18

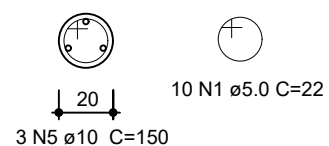
Planta
Esc. 1:50



Corte
Esc. 1:50



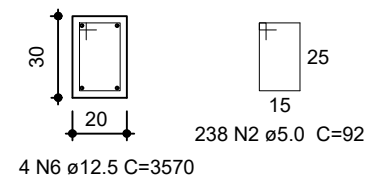
Broca
ESC 1:25



VIGA BALDRAME

Esc. 1:25

VB01



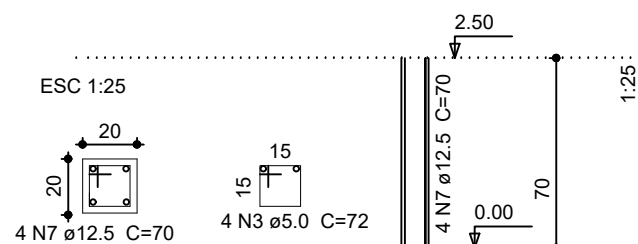
Relação do aço

AÇO	N	DIAM	Q	UNIT (cm)	C.TOTAL (cm)
CA50/CA60	1	5.0	180	22	3960
	2	5.0	476	92	43792
	3	5.0	72	72	5184
	4	10.0	108	64	6912
	5	10.0	54	150	8100
	6	10.0	4	3570	14280
	7	12.5	72	70	5040
	8	12.5	4	3570	14280

PILARES

Esc. indicada

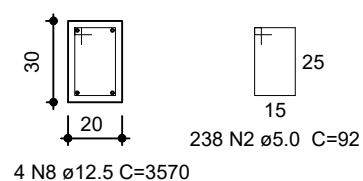
P01 à P18



VIGAS

Esc. 1:25

V01



Resumo do aço

AÇO	DIAM	C.TOTAL (m)	PESO (kg)
CA60	5.0	529.36	83.11
CA50	10.0	292.92	180.73
	12.5	193.20	186.05

PESO TOTAL (kg) CA50/CA60 449.89
Vol. de concreto total (C-25) = 8.79 m³

TITULO — PROJETO ESTRUTURAL PARA CONSTRUÇÃO DO MURO DE ARRIMO DA ROTATÓRIA		Eng. Stella Siqueira de Carvalho CREA MG 107.715 / D
LOCAL — RUA MIGUEL MARTINS DE CARVALHO/ RUA CAPITÃO TOTÓCA/ RUA GUSTAVO CESAR DE CARVALHO - BAIRRO NOSSA SENHORA APARECIDA - SANTA RITA DE CALDAS		
PROPRIETÁRIO — PREFEITURA MUNICIPAL DE SANTA RITA DE CALDAS		Prefeitura Municipal de Santa Rita de Caldas CNPJ: 17.857.442/0001-51
DATA SETEMBRO/2022	ESCALA INDICADA	FOLHA 01/01