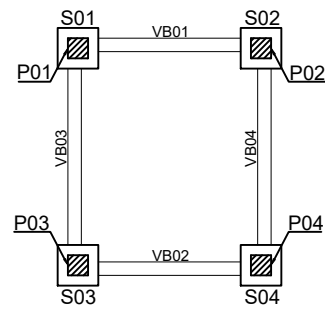
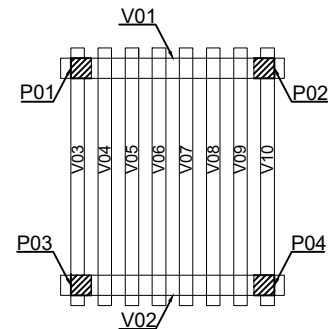


## IMPLANTAÇÃO DAS ESTRUTURAS

Esc. 1:100



Sapatas, vigas baldrame e pilares

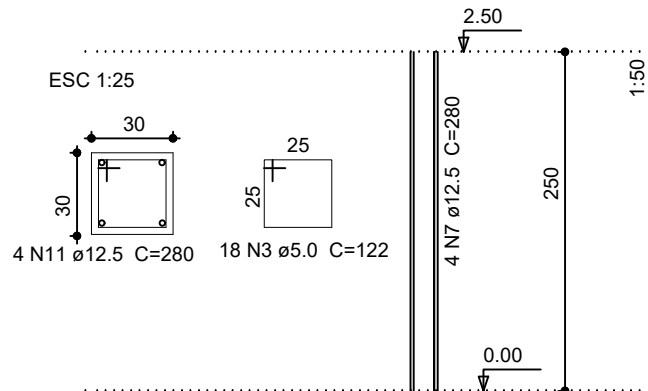


Pilares e vigas

## PILARES

Esc. indicada

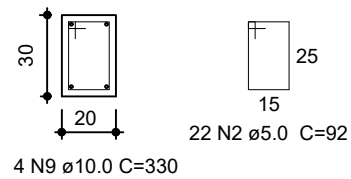
P01 à P04



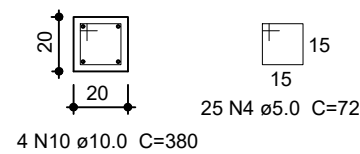
## VIGAS

Esc. 1:25

V01 = V02



V03 = V04 = V05 = V06  
V07 = V08 = V09 = V10

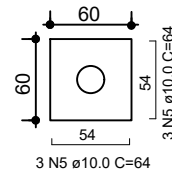


## SAPATAS/BROCAS

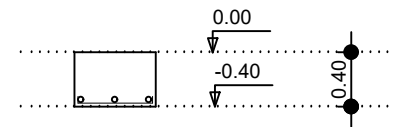
Esc. indicada

S01 à S04

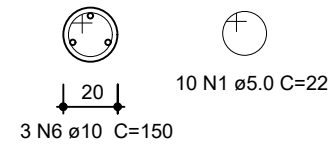
Planta  
Esc. 1:50



Corte  
Esc. 1:50



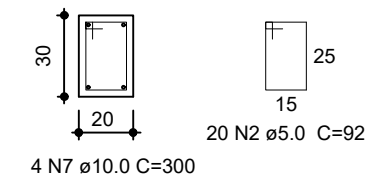
Broca  
ESC 1:25



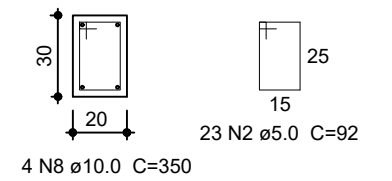
## VIGAS BALDRAMES

Esc. 1:25

VB01 = VB02



VB03 = VB04



## Relação do aço

AÇO	N	DIAM	Q	UNIT (cm)	C.TOTAL (cm)
CA50/CA60	1	5.0	40	22	880
	2	5.0	130	92	11960
	3	5.0	72	122	8784
	4	5.0	200	72	14400
	5	10.0	24	64	1536
	6	10.0	12	150	1800
	7	10.0	8	300	2400
	8	10.0	8	350	2800
	9	10.0	8	330	2640
	10	10.0	32	380	12160
	11	12.5	32	280	8960

## Resumo do aço

AÇO	DIAM	C.TOTAL (m)	PESO (kg)
CA60	5.0	360.24	55.48
CA50	10.0	233.36	143.98
	12.5	89.60	86.29
PESO TOTAL (kg)			
CA50/CA60	285.75		

Vol. de concreto total (C-25) = 12.58 m³

TITULO — PROJETO ESTRUTURAL PARA CONSTRUÇÃO DO PERGOLADO  
RUA MIGUEL MARTINS DE CARVALHO/ RUA CAPITÃO TOTOCA/  
LOCAL — RUA GUSTAVO CESAR DE CARVALHO - BAIRRO NOSSA SENHORA APARECIDA - SANTA RITA DE CALDAS

PROPRIETÁRIO — PREFEITURA MUNICIPAL DE SANTA RITA DE CALDAS

Eng. Stella Siqueira de Carvalho  
CREA MG 107.715 / D

Prefeitura Municipal de Santa Rita de Caldas  
CNPJ: 17.857.442/0001-51

DATA  
SETEMBRO/2022

ESCALA  
INDICADA

FOLHA  
01/01