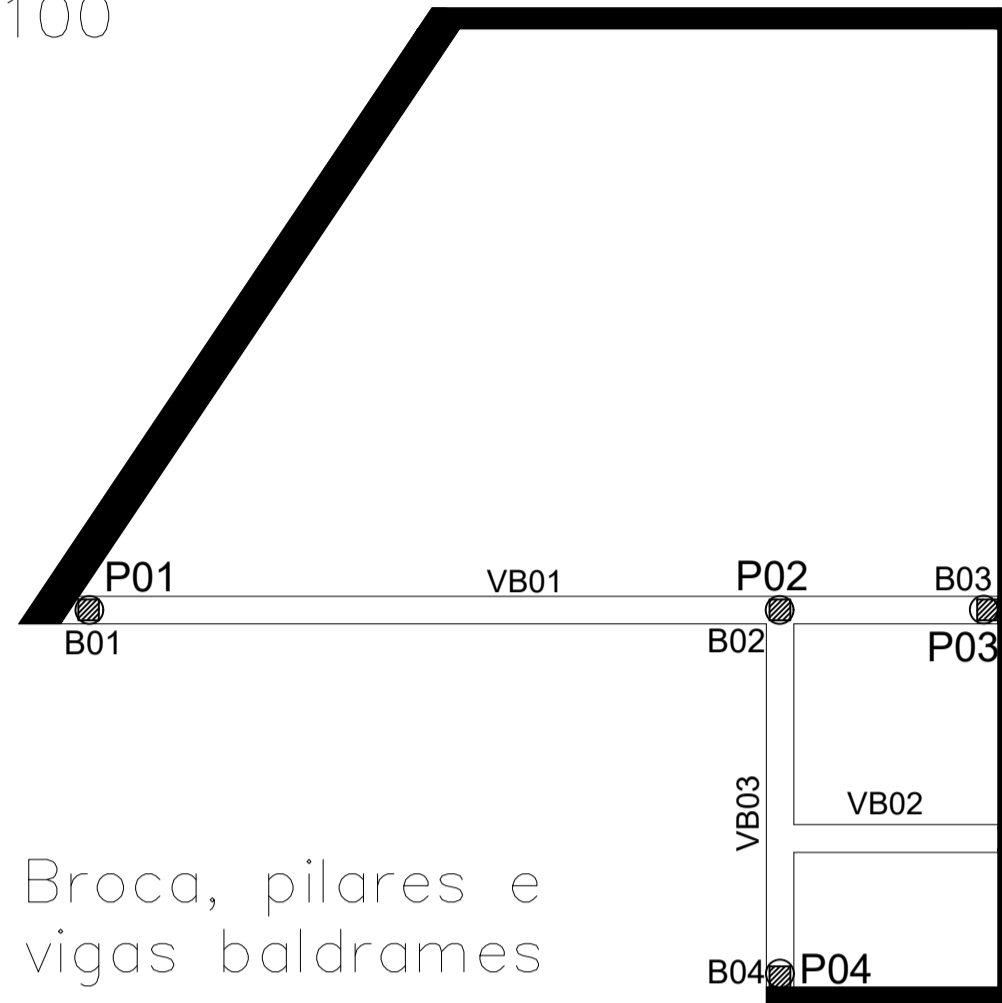


IMPLANTAÇÃO DAS ESTRUTURAS

Esc. 1:100



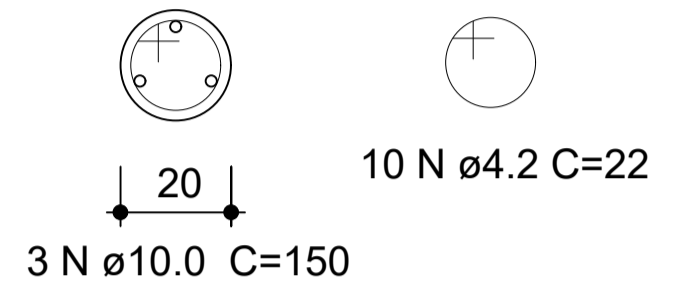
Broca, pilares e vigas baldrames

BROCAS

Esc. indicada

B01 à B04

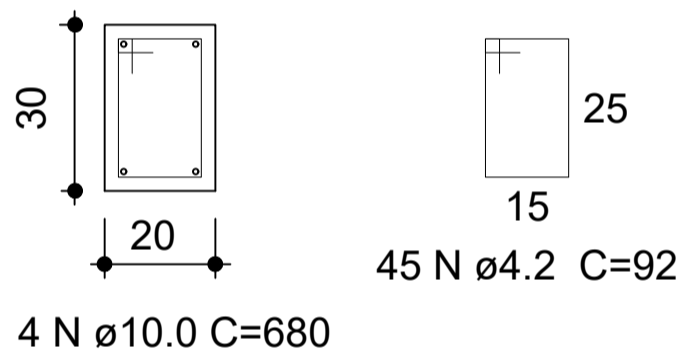
Broca
ESC 1:25



VIGAS BALDRAMES

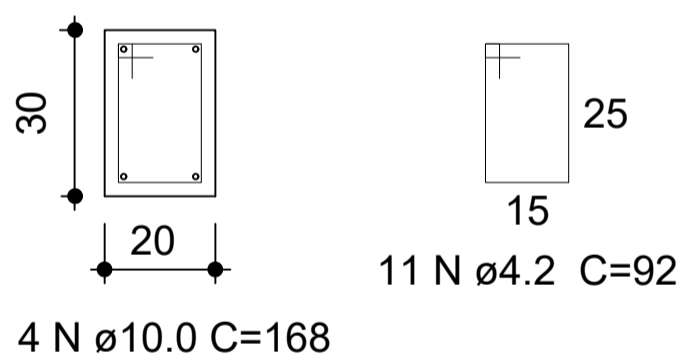
Esc. 1:25

VB01 = VB02



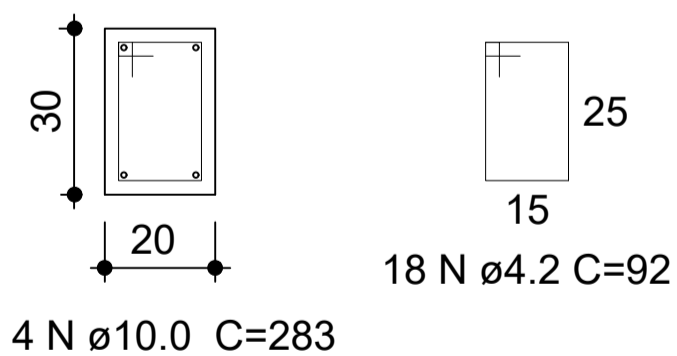
4 N ϕ 10.0 C=680

VB01 = VB02



4 N ϕ 10.0 C=168

VB03

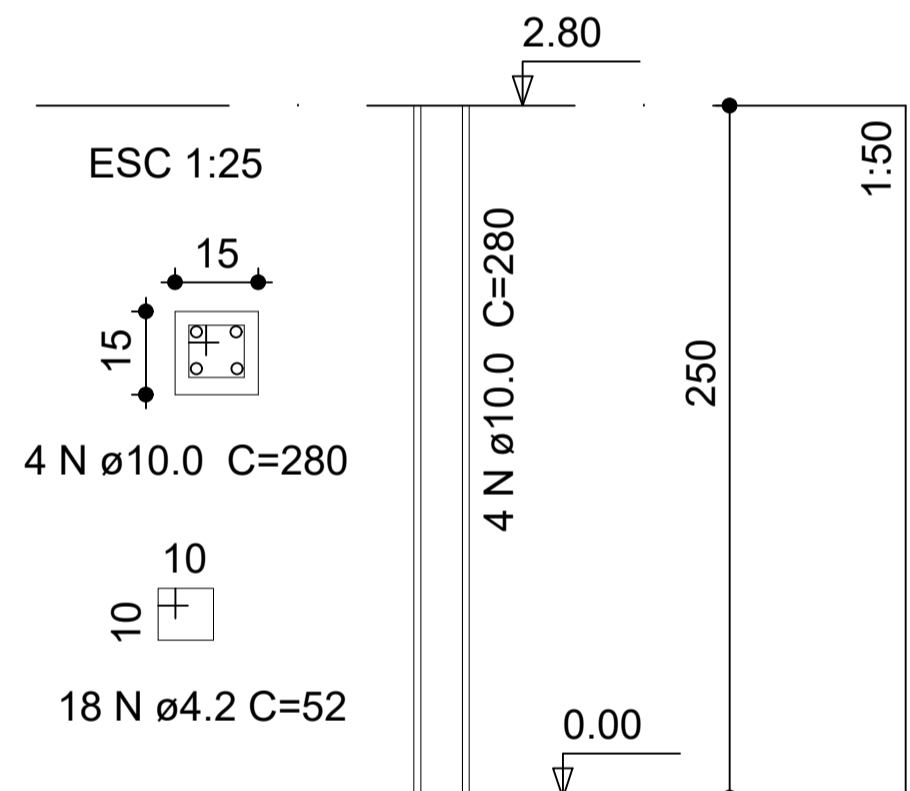


4 N ϕ 10.0 C=283

PILARES

Esc. indicada

P01 à P04



Resumo do aço

AÇO	DIAM	C.TOTAL (m)	PESO (kg)
CA60	4.2	105.41	11.49
CA50	10.0	116.53	71.90
PESO TOTAL (kg)			
CA50/CA60	83.39		

Vol. de concreto total = 1.19 m³

TÍTULO — PROJETO ESTRUTURAL PARA CONSTRUÇÃO DO BANHEIRO DA SALA DO PROFESSORES

LOCAL — PRAÇA DR. ISSA MIGUEL SALOMÃO, Nº. 10
BAIRRO CENTRO - SANTA RITA DE CALDAS/MG

PROPRIETÁRIO — PREFEITURA MUNICIPAL DE SANTA RITA DE CALDAS

Eng. Stella Siqueira de Carvalho
CREA MG 107.715 / D

Prefeitura Municipal de Santa Rita de Caldas
CNPJ: 17.857.442/0001-51

DATA
NOVEMBRO/2022

ESCALA
INDICADA

FOLHA
01/01