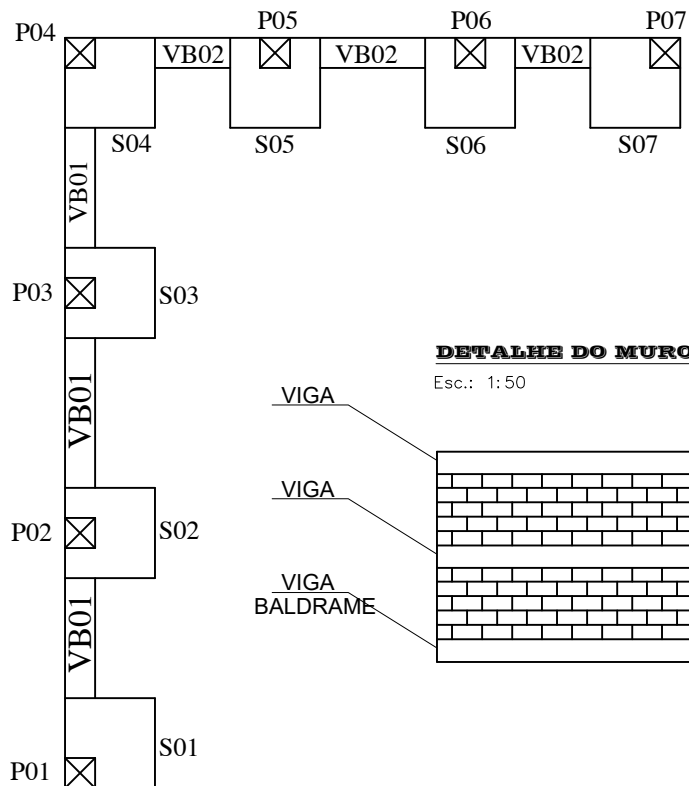


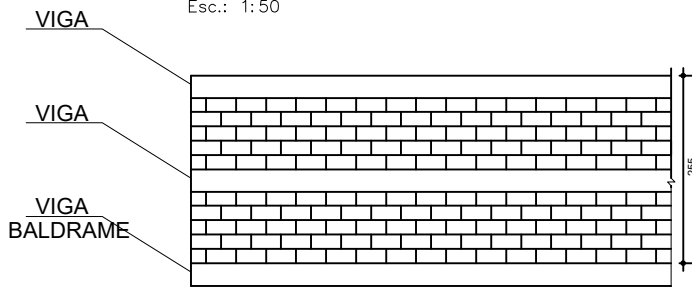
IMPLANTAÇÃO DAS ESTRUTURAS

Esc.: 1:25



DETALHE DO MURO

Esc.: 1:50



Relação do aço

AÇO	N	DIAM	Q	UNIT (cm)	C.TOTAL (cm)
CA60	1	5.0	182	22	4004
	2	5.0	180	92	16560
	3	5.0	119	72	8568
CA50	4	10.0	56	65	3640
	5	10.0	42	215	9030
	6	12.5	12	500	6000
	7	12.5	12	410	4920
	8	12.5	28	255	7140

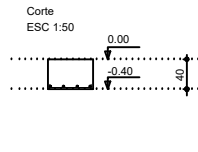
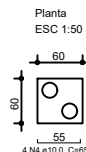
Resumo do aço

AÇO	DIAM	C.TOTAL (m)	PESO (kg)
CA60	5.0	291.32	44.86
CA50	10.0	126.70	78.17
CA50	12.5	180.60	173.92

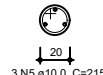
PESO TOTAL (+10% perca)	Vol. de concreto total (C-25) = 4.46 m³
CA60 49.35	Área de forma total = 15.66 m²
CA50 277.30	

SAPATAS

Esc.: indicado



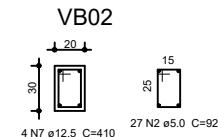
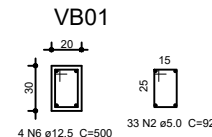
Broca
ESC 1:25



13 N1 ø5.0 C=22

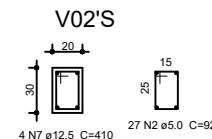
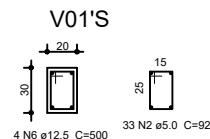
VIGA BALDRAME

Esc. 1:25



VIGAS

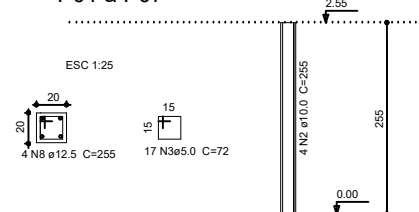
Esc. 1:25



PILARES

Esc. indicada

P01 à P07



TITULO — PROJETO ESTRUTURAL PARA CONSTRUÇÃO DE MURO DE ARRIMO		Eng. Stella Siqueira de Carvalho CREA MG 107.718 / D	
LOCAL — RUA JOÃO BATISTA LEMES, Nº. 292 - VILA NOVA SANTA RITA DE CALDAS		Prefeitura Municipal de Santa Rita de Caldas CNPJ: 17.857.442/0001-81	
PROPRIETÁRIO — PREFEITURA MUNICIPAL DE SANTA RITA DE CALDAS		DATA MARÇO/2023	ESCALA INDICADA
		FOLHA 01/01	