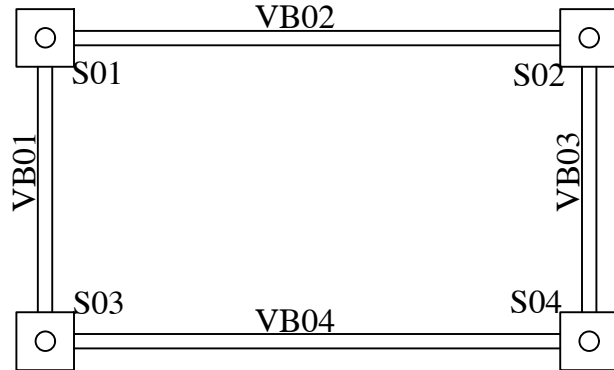


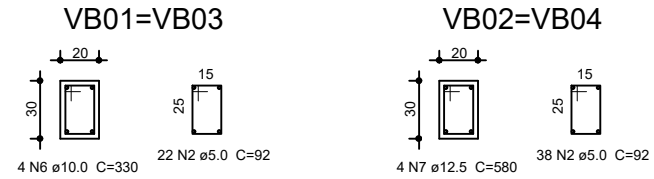
## IMPLANTAÇÃO DAS ESTRUTURAS

Esc.: 1:25



## VIGA BALDRAME

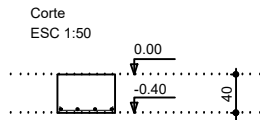
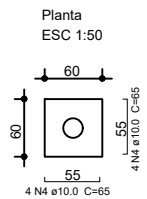
Esc. 1:25



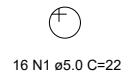
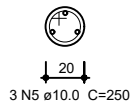
## SAPATAS

Esc.: indicada

S01=S02=S03=S04



Broca ESC 1:25



## Resumo do aço

AÇO	DIAM	C.TOTAL (m)	PESO (kg)
CA60	5.0	373.44	57.51
CA50	10.0	366.00	225.81
PESO TOTAL (+ 10% perca)			
CA60		63.27	
CA50		248.40	

Vol. de concreto total (C-25) = 6.09 m³

**TÍTULO** — PROJETO ESTRUTURAL PARA CONSTRUÇÃO DOS QUIOSQUES  
**LOCAL** — RUA PREFEITO URIEL ALVIM, 206 - CENTRO SANTA RITA DE CALDAS  
**PROPRIETÁRIO** — PREFEITURA MUNICIPAL DE SANTA RITA DE CALDAS

Eng. Stella Siqueira de Carvalho  
 CREA MG 107.715 / D

Prefeitura Municipal de Santa Rita de Caldas  
 CNPJ: 17.857.442/0001-51

DATA  
 NOV/2023

ESCALA  
 INDICADA

FOLHA  
 01/01